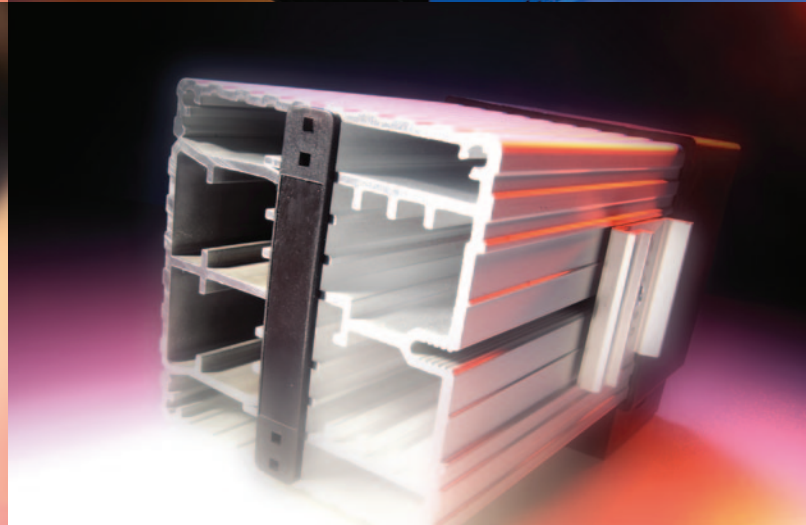
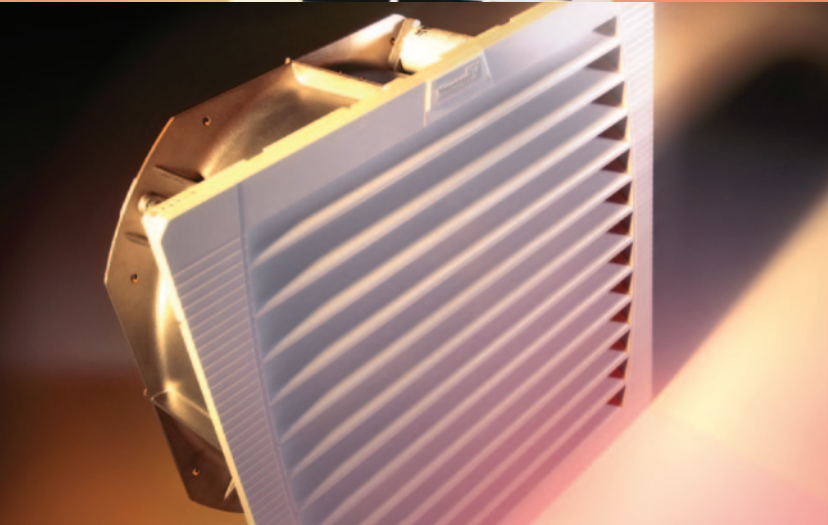


# Thermal Management Solutions

Cooling Units • Air/Water Heat Exchangers • Chillers  
Filterfans® • Heaters, Thermostats and Hygrostats

Main Catalog • Edition 11



SHARING  
COMPETENCE | 

**Pfannenberg**   
ELECTRO-TECHNOLOGY FOR INDUSTRY

Type	Cooling Capacity Btu/h	Rated Voltage	Dimensions H x W x D Inches (mm)	Approvals				Page
				UL	cUL	GOST	CE	
<b>DTT Series Top Mount NEMA 12 Cooling Units</b>								
DTT 6101	1200 - 2000	115 V / 230 V	17.13 x 23.43 x 15.55 (435 x 595 x 395)	●	●		●	39
DTT 6201	2500 - 4000	115 V / 230 V / 400/460 V	17.13 x 23.43 x 15.55 (435 x 595 x 395)	●	●		●	39
DTT 6301	4000 - 5500	115 V / 230 V / 460 V	17.13 x 23.43 x 19.49 (435 x 595 x 495)	●	●		●	41
DTT 6401	5500 - 7000	115 V / 230 V / 460 V	17.13 x 23.43 x 19.49 (435 x 595 x 495)	●	●		●	41
DTT 6601	7000 - 10000	460 V	19.09 x 31.30 x 22.64 (485 x 795 x 575)	●	●		●	43
DTT 6801	12000 - 14000	460 V	19.09 x 31.30 x 22.64 (485 x 795 x 575)	●	●		●	43
<b>DTS Series Outdoor Cooling Units - NEMA Type 3R/4</b>								
DTS 3031	900-1300	115 V / 230 V	15.5 (393.7) x 7 (177.8) x 7.75 (196.8)	●	●		●	47
DTS 3061	2000 - 3000	115 V / 230 V	20.16 x 10.08 x 10.79 (512 x 256 x 274)	●	●		●	49
DTS 3161	3000 - 4000	115 V / 230 V / 400/460 V	29.45 x 15.55 x 11.57 (748 x 395 x 294)	●	●		●	51
DTS 3161 SL	3000 - 5000	115 V / 230 V / 400/460 V	36 (914) x 12 (305) x 12 (302)	●	●		●	53
DTS 3165	5000 - 7000	115 V / 230 V / 400/460 V	36 (914) x 12 (305) x 12 (302)	●	●		●	55
DTS 3261	7000 - 8500	115 V / 230 V / 460 V	47.60 x 15.55 x 12.83 (1209 x 395 x 326)	●	●		●	57
DTS 3265	9000 - 12000	115 V / 230 V / 400/ 460 V	53 (1347) x 16.2 (411) x 11.9 (301)	●	●		●	59
DTS 3361	12000 - 14000	230 V / 400 V / 460 V	59.13 x 15.87 x 18.42 (1502 x 403 x 468)	●	●		●	61
DTS 3561	16000 - 18000	230 V / 400 V / 460 V	59.13 x 19.02 x 21.02 (1502 x 483 x 534)	●	●		●	63
DTS 3661	20000 - 24000	230 V / 400 V / 460 V	65.63 x 19.02 x 25.53 (1667 x 483 x 623)	●	●		●	65
<b>DTS Series Washdown Cooling Units - NEMA Type 4/4X</b>								
DTS 3031 SS	900-1300	115 V / 230 V	15.5 (393.7) x 7 (177.8) x 7.75 (196.8)	●	●		●	69
DTS 3081	2000 - 3000	115 V / 230 V	20.16 x 10.08 x 10.79 (512 x 256 x 274)	●	●		●	71
DTS 3181	3000 - 4000	115 V / 230 V / 400/460 V	29.45 x 15.55 x 11.57 (748 x 395 x 294)	●	●		●	73
DTS 3181 SL	3000 - 5000	115 V / 230 V / 400/460 V	36 (914) x 12 (305) x 12 (302)	●	●		●	75
DTS 3185	5000 - 7000	115 V / 230 V / 400/ 460 V	36 (914) x 12 (305) x 12 (302)	●	●		●	77
DTS 3281	7000 - 8500	115 V / 230 V / 460 V	47.60 x 15.55 x 12.83 (1209 x 395 x 326)	●	●		●	79
DTS 3285	9000 - 12000	115 V / 230 V / 400/ 460 V	53 (1347) x 16.2 (411) x 11.9 (301)	●	●		●	81
DTS 3381	12000 - 14000	230 V / 400 V / 460 V	59.13 x 15.87 x 18.42 (1502 x 403 x 468)	●	●		●	83
DTS 3581	16000 - 18000	230 V / 400 V / 460 V	59.13 x 19.02 x 21.02 (1502 x 483 x 534)	●	●		●	85
DTS 3681	20000 - 24000	230 V / 400 V / 460 V	65.63 x 19.02 x 25.53 (1667 x 483 x 623)	●	●		●	87
<b>DTI Series Integrated/Recessed (European)</b>								
DTS 9011H	300 W	115 V / 230 V	11.81 x 19.49 x 5.51 (300 x 495 x 140)	●	●	○	●	91
DTI 9021	320 W	115 V / 230 V	12.95 x 15.16 x 9.92 (329 x 385 x 252)	●	●	●	●	93
DTI 9031	510 W	115 V / 230 V / 460 V	22.13 x 12.21 x 8.35/8.35/13.90 (562 x 310 x 212/212/353)	●	●	●	●	95
DTI 9241	1000 W	230 V / 400 / 460 V	60.59 x 19.09 x 7.09 (1536 x 485 x 180)	●	●	●	●	97
DTI 9341	1500 W	230 V / 400 / 460 V	60.59 x 19.09 x 7.09 (1536 x 485 x 180)	●	●	●	●	97
DTS 9441	2000 W	230 V / 400 / 460 V	60.59 x 19.09 x 9.45 (1536 x 485 x 240)	●	●	●	●	99
DTS 9541	2500 W	230 V / 400 / 460 V	60.59 x 19.09 x 9.45 (1536 x 485 x 240)	●	●	●	●	99
DTS 9841	4000 W	400 / 460 V	60.59 x 19.09 x 14.17 (1539 x 485 x 360)	●	●	●	●	101
<b>Thermal-Electric Peltier Indoor Cooling Units</b>								
PTM 100	100 W	24 VDC	14.45 (367) x 7.13 (181) x 8.9 (226)				●	103
PTM 150	150 W	24 VDC	19.49 (495) x 7.13 (181) x 8.9 (226)				●	103
<b>DTS Series Water Cooled Cooling Units</b>								
DTS 31X5 WC	6000-8000	VDC		●	●		●	107
DTS 32X5 WC	10000 - 12000	VDC		●	●		●	107
<b>DTS Series High Temperature Cooling Units</b>								
DTS 3265 HT	2800 W	<b>230 V ONLY</b>	53 (1347) x 16.2 (411) x 11.9 (301)	●	●		●	109
DTS 3165 HT	1600 W	<b>230 V ONLY</b>	36 (914) x 12 (305) x 12 (302)	●	●		●	109
DTS 3061 HT	600W	<b>230 V ONLY</b>	20.16 x 10.08 x 10.79 (512 x 256 x 274)	●	●		●	109

● available  
○ pending

# Cooling Units - Water Cooled

**DTS 3145 WC**  
**DTS 3165 WC**  
**DTS 3185 WC**

**DTS 3245 WC**  
**DTS 3265 WC**  
**DTS 3285 WC**



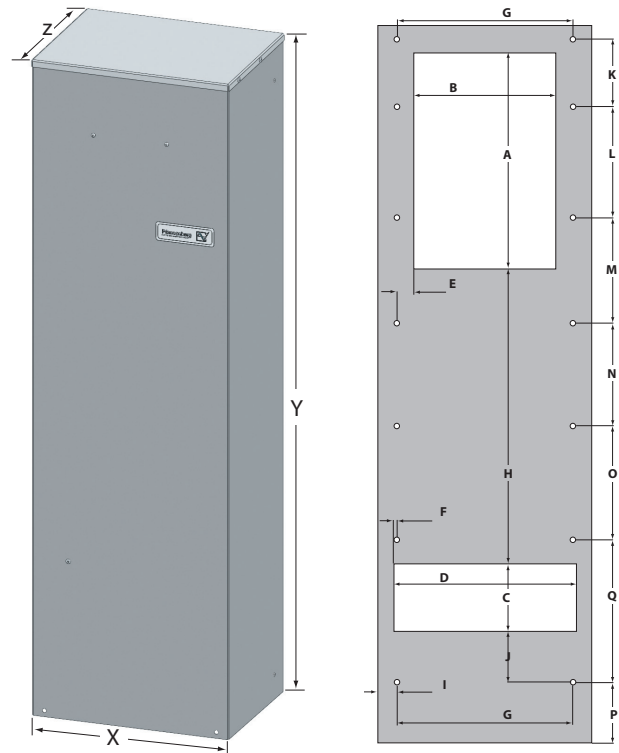
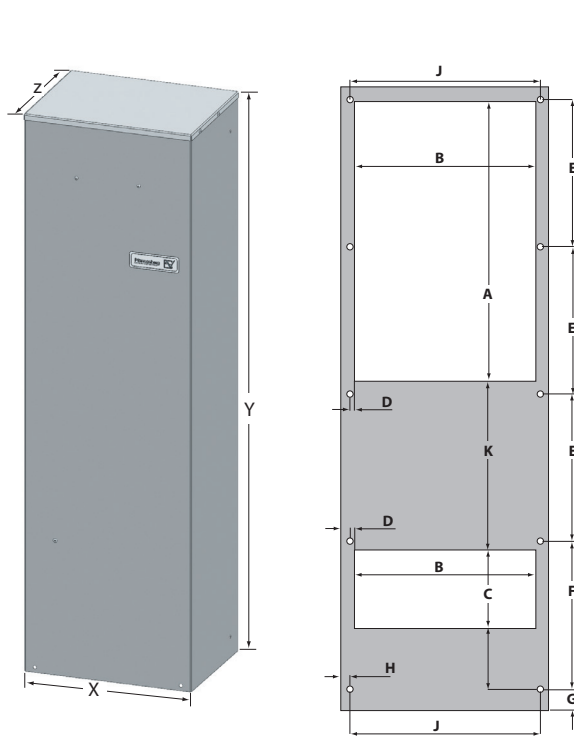
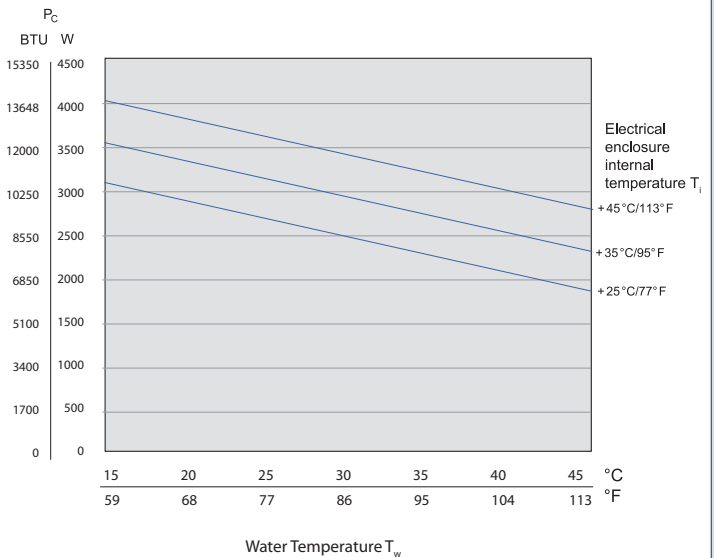
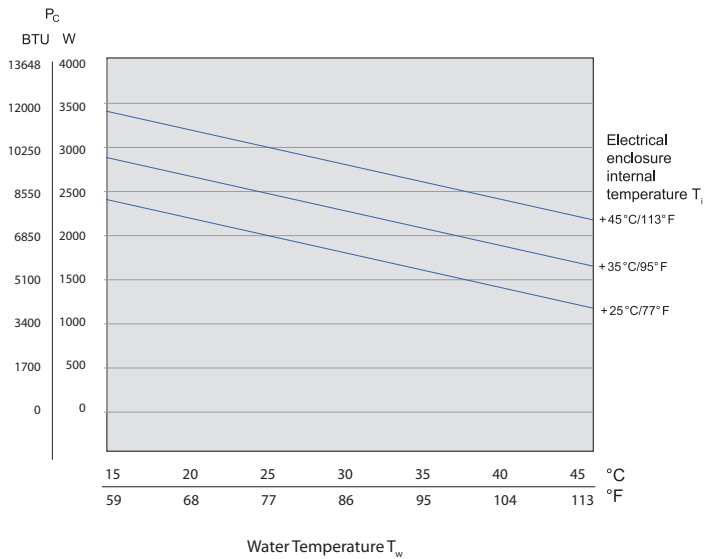
- Available in Type 12, NEMA Type 3R/4, and NEMA Type 4/4X
- Cutout sizes same as standard cooling units
- Provides high cooling capacity independent of ambient conditions
- Designed to use cooling water at various temperatures
- Includes factory-installed water control valve and inlet strainer

Data		DTS 31X5 WC	DTS 32X5 WC	Unit	
Part numbers	Indoor Type 12	ANSI 61 (Gray)	13385636255	13385836255	
		RAL 7035 (Light Gray)	13385636251	13385836251	
	Outdoor Type 3R/4	ANSI 61 (Gray)	13385636355	13385836355	
		RAL 7035 (Light Gray)	13385636351	13385836351	
	Washdown Type 4/4X	304 Stainless Steel	13385636158	13385836158	
Rated voltage ± 10 %		400 / 460 3Ø		VAC	
Frequency		50 / 60		Hz	
Cooling performance		W30/A35/A35	6000 - 8000	10,000 - 12,000	Btu/h
Power consumption			1283	1300	W
Nominal (Run) Current @ 35A/35A °C			1.9	2.2	A
Starting current			16	16	
Unimpeded airflow (free flow)		internal	706 (1200)		CFM (m³/h)
Water Flow Rate			1.5		GPM
Water Connections			1/2" NPTF		
Fuse (Recommended) Class CC			5		A
Type of connection			permanent spring terminal		
Noise level (according to EN ISO 3741)			Call for information		dB(A)
Weight (without packaging)			108 (49)	150 (68)	lb (kg)
Ambient temperature range			+ 59 ... + 15 / + 131 ... + 55		°F / °C
Control range (adjustable)		SC	+ 77 ... + 25 / + 113 ... + 45		
Refrigerant	type		R134a		
	quantity		600		gm
Duty cycle			100 %		
Condensate management			active condensate evaporation system with safety overflow		
Protection system according to NEMA type			NEMA 12 against enclosure when properly installed		
			NEMA 1 towards the surroundings when properly installed		
Design	housing		galvanized sheet steel		
	cover		galvanized/powder coated (200 °C) or stainless steel		

Approvals see page 11/12

**Cooling Capacity Performance Curves**  
**DTS 31x5 WC**

**Cooling Capacity Performance Curves**  
**DTS 32x5 WC**



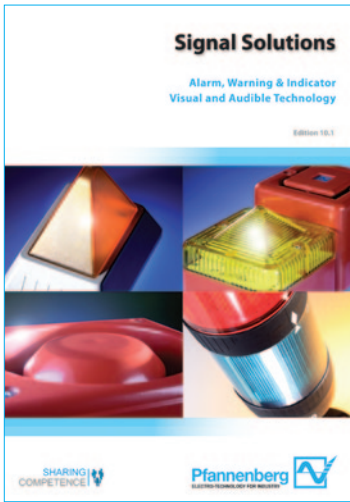
DTS 31x5	X	Y	Z	A	B	C	D	E	F	G	H	I	J	K
inches	12	36	12	17	10.4	4.7	.30	8.5	8.5	1.3	.5	3.2	11	9
(mm)	(304)	(914)	(304)	(430)	(264)	(118)	(8)	(216)	(216)	(32)	(13)	(80)	(279)	(228)

Mounting holes Ø 10 mm • For exact cutout information reference drilling template at [pfannenbergusa.com](http://pfannenbergusa.com)

DTS 32x5	X	Y	Z	A	B	C	D	E	F	G	H	I	J	K	L	M	N	O	P	Q
inches	16.0	53.0	11.9	16.8	11	5.3	13.7	.98	.35	13.0	21.1	1.4	3.6	5.0	8.2	7.8	7.6	8.4	4.5	10.5
(mm)	(406)	(1347)	(301)	(427)	(280)	(135)	(348)	(25)	(9)	(330)	(537)	(35)	(92)	(126)	(209)	(198)	(192)	(214)	(114)	(267)

Mounting holes Ø 8 mm • For exact cutout information reference drilling template at [pfannenbergusa.com](http://pfannenbergusa.com)

**Other products and literature available from Pfannenberg...**



*Signal Solutions Guide*



*Global Service Guide*



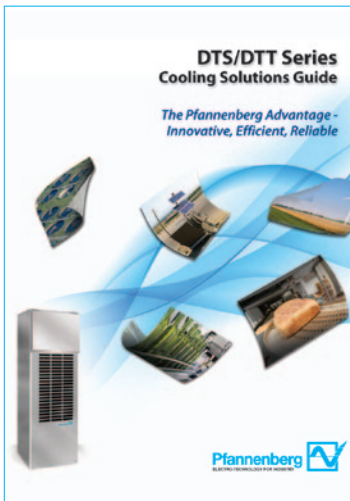
*DTT Series Cooling Units*



*Wind Energy Solutions Guide*



*Food & Beverage Thermal Management Solutions*



*Cooling Solutions Guide*

**A Bright Idea!**  
*Building, Landmark & Art Illumination by Pfannenberg*

*Durable weather-resistant design and long service life make Pfannenberg lighting systems the optimal choice.*

*Call today for more information!*

*TV Tower & Trinity Bridge, St. Petersburg, Russia*

*Eiffel Tower, Paris, France*



Pfannenberg Incorporated  
68 Ward Road  
Lancaster, New York 14086 USA  
Phone: 716-685-6866  
Fax: 716-681-1521

[info@pfannenbergusa.com](mailto:info@pfannenbergusa.com)  
[www.pfannenbergusa.com](http://www.pfannenbergusa.com)



Subject to technical amendments and misprints.